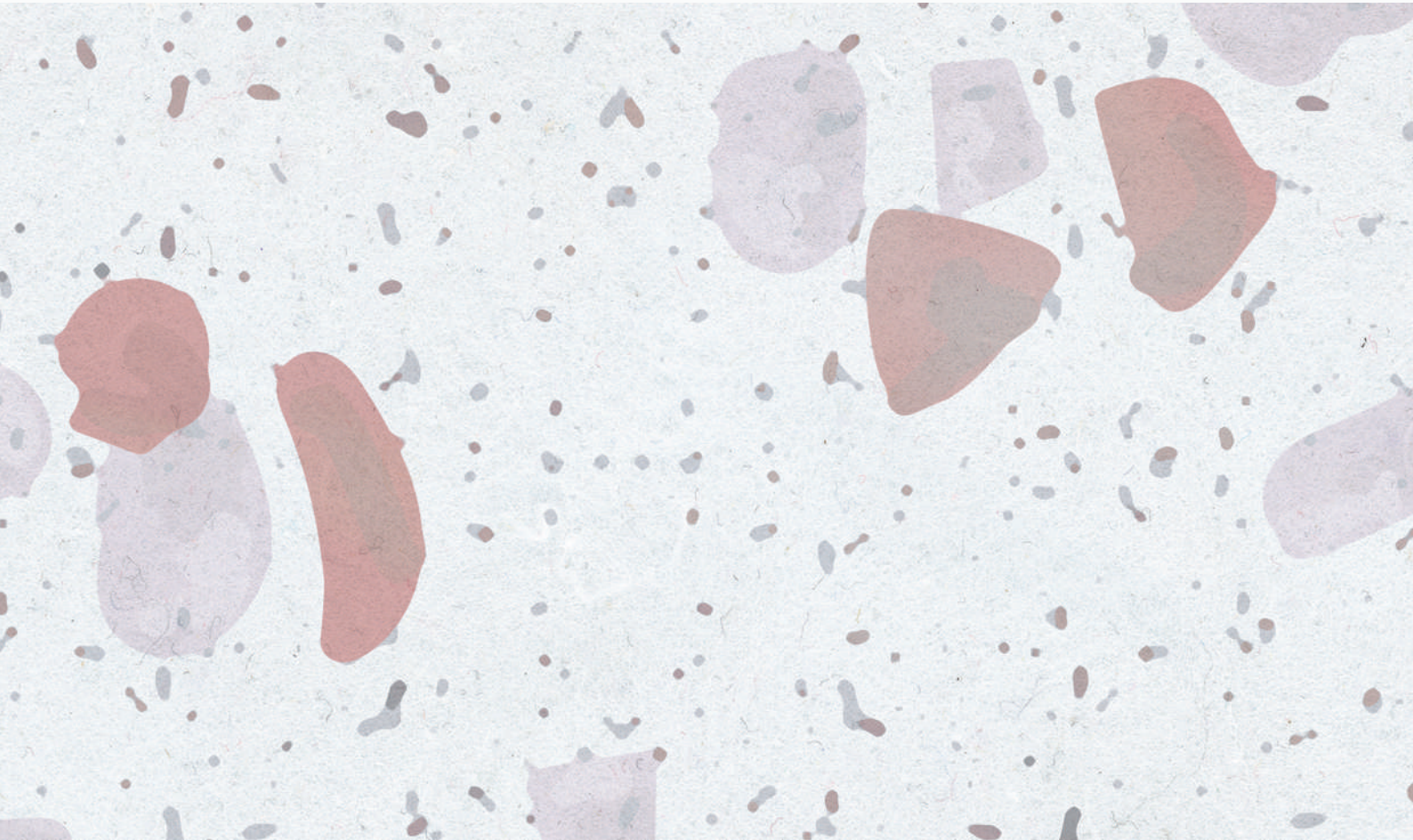


# TRU SELF-LEVELING

By JBA Concrete Solutions



Tested in accordance with ASTM C1708

**DESCRIPTION:** Rapid Set ® TRU ® SELF-LEVELING is an advanced, professional grade, hydraulic cement-based, architectural topping and resurfacer. It can be ground and polished to a high-gloss appearance. TRU SELF-LEVELING rapidly levels, has long flow life and maintains workability for 20 minutes, is ready for foot traffic in 2 to 3 hours, produces a smooth, strong surface, has high-bond strength, and ready for coatings in 12 hours. As an interior and exterior product, it is durable in wet or dry conditions. TRU SELF-LEVELING is available in natural and gray.

**USES:** Use TRU SELF-LEVELING for finished floors in commercial, institutional and recreational facilities.

**ENVIRONMENTAL ADVANTAGES:** Use TRU SELF-LEVELING to reduce your carbon footprint and lower your environmental impact. Production of Rapid Set cement emits far less CO<sub>2</sub> than portland cement.

**APPLICATION:** Apply TRU SELF-LEVELING when a high quality, fast, polishable topping is required. TRU SELF-LEVELING is ideal for projects that need long flow life and working time while achieving high early strength. A customized appearance can be achieved by adding integral colors and/or decorative aggregate. Protective coatings, sealers or epoxies can be applied per the manufacturer's recommendations after 12 hours.



# THE PROCESS OF A TRU<sup>®</sup>

## SELF-LEVELING POLISHED OVERLAY

**PROFILE SUBSTRATE:** Mechanically prepare the surface to obtain an ICRI CSP 3 to 5 ( Light Shortblast, Light Scarification, Medium Shortblast)

- All joints must be honored
- Remove all loose, unsound, contaminated material
- Suitable substrates require a minimum 3,000 psi (20.7 MPa) and a minimum density of 100 pcf (pounds per cubic foot)
- Fill all cracks with the appropriate crack material

**PRIME:** Use our alkali-resistant fast-track epoxy Primers.

Our alkali-resistant Epoxy Primers offer high bond and long term performance

- Requires 1/2 to 3/4 lbs of 20 to 30 mesh dry silica sand per square foot
- Suitable for substrates exhibiting an RH of up to 100%

Cure time:

- 3 to 6 hours

**MIX AND PLACEMENT:**

- Minimum depth of 3/8"
- All joints must be honored
- Options: colorants / aggregates
- Use appropriate mixing equipment and placement tools

**GRIND AND POLISH:** In 24 hours

- Grind wet or dry

## ADVANTAGES

### SELF-LEVELING POLISHED OVERLAY



#### **DECORATIVE**

Designed specifically for polishing and decorative flooring applications



#### **DESIGN OPTIONS**

Customize your floors by adding aggregates and colors



#### **OUTSTANDING CLARITY AND GLOSS**

Highly polishable due to low polymer content and high density



#### **FAST TRACK**

Foot traffic in 2 to 3 hours, grind wet or dry, and polish in 24 hours



#### **ENVIRONMENTAL ADVANTAGES**

Use to reduce your carbon footprint and lower your environmental impact



#### **HIGH PERFORMANCE**

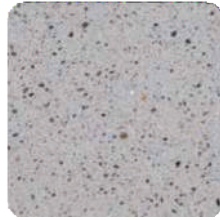
Durable in dry and wet areas

TYPE OF FINISH - MATTE / GLOSSY

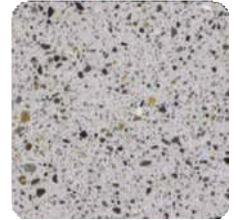
TYPE OF BLEND - AGGREGATE, GLASS, MOTHER OF PEARL, ROCK, MARBLE



Cream Finish



Low Level Blend



High Level Blend

# TRU INTEGRAL COLORS

**Samples shown should be used as a guide only. Results will vary due to aggregate, finishing techniques and environmental factors.** To match specific color, jobsite testing should be done. \*Represents the color and aggregate load from the bag with no additional colorants and/or aggregates.



SADDLE BROWN



EMERALD



PLATINUM



SLATE



CHOCOLATE



VIOLET



CHARCOAL



BLACK



GOLD



ROYAL BLUE



BURNT  
SIENNA



WALNUT



YELLOW



SCARLET

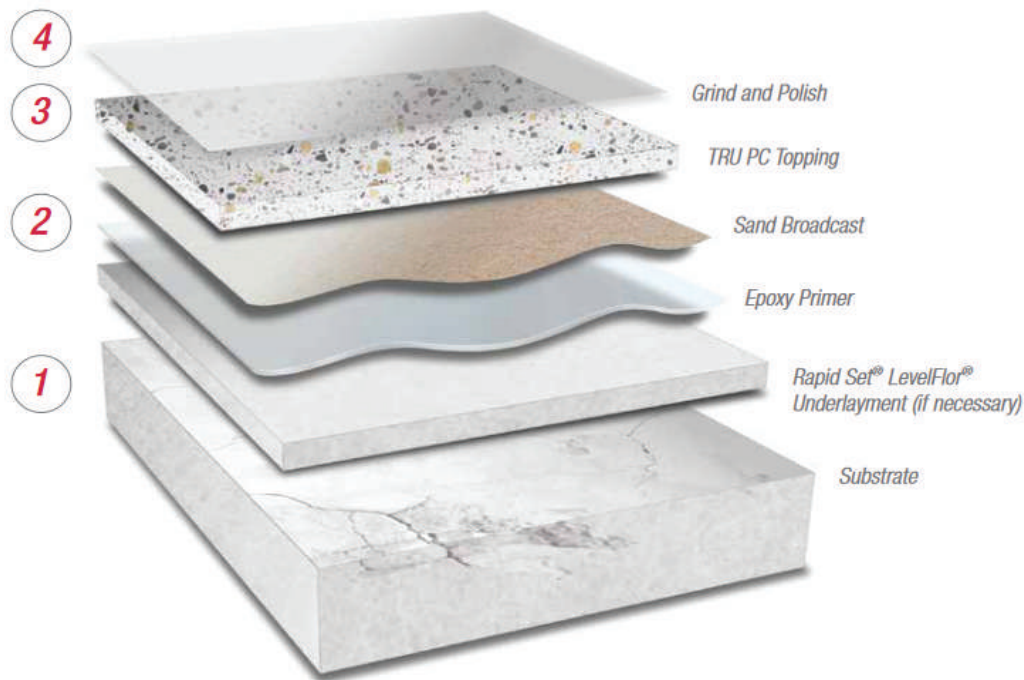


OLIVE  
GREEN



CAPPUCCINO

# Visual Illustration



## CONTRIBUTING TO A HEALTHIER PLANET, ONE FLOOR AT A TIME



Rapid Set® cement uses by-products from recycling processes as raw materials which are not removed from the ground. The production of normal portland cement emits roughly 0.9 tons of CO<sub>2</sub> per ton of cement. Rapid Set cement emits 32% less CO<sub>2</sub> than portland cement because of less fuel, lower temperatures, and less limestone being used in the production process.

Since Rapid Set cement concrete lasts longer than portland cement concrete, replacement and maintenance are reduced, which means less pollution is released into the environment. The TRU® Flooring system has been used in many facilities earning LEED Platinum, Gold, Silver, and Certified status.



### PRODUCT HIGHLIGHT

- High clarity and reflectivity
- Accepts high-build coatings in 16 hours
- Accepts integral color systems
- Fast-track projects by grinding wet or dry and polishing in 24 hours



### PERFORMANCE

- Compressive Strength, ASTM C109 Mod.\*  
4,000 psi (27.6 MPa) in 24 hours  
6,500 psi (44.8 MPa) in 28 days



### ENVIRONMENTS

- Commercial, institutional and recreational facilities
- High-pedestrian traffic, forklift traffic or other rubber-wheeled traffic
- Schools, airports, warehouses, retail, restaurants, lobbies, and more



### CSI DIVISION CLASSIFICATIONS

- Concrete Topping 03 53 00
- Cast-in-Place Concrete 03 30 00