



20 YEARS OF LASTING HISTORY



RESTORATION & POLISHING SYSTEMS

**JBA**

*Bringing Life To Concrete*

[www.jbaindia.com](http://www.jbaindia.com)

011 41553830 / 011 41553820

[info@jbaindia.com](mailto:info@jbaindia.com)



## The RetroPlate™ System

is a complete process that revitalizes and strengthens concrete floors. Since 1996 this process has been transforming new and old concrete into strong, durable and beautiful surfaces. RetroPlate will enhance industrial, retail or commercial concrete floors, while eliminating the on going costs of coatings and floor cover failures.

RetroPlate™ makes weak concrete strong and turns stained or difficult-to-clean concrete into a beautiful surface that is easy to clean and maintain.

## 10-Year Warranty

The RetroPlate™ System provides a permanent solution to floor problems and is not only functional but also architecturally and design ambitious as well. With the RetroPlate™ System, you will never have to replace, reapply, recoat or wax your floor again.

To maintain your RetroPlate™ floor, all that is required is routine cleaning. Combine the RetroPlate™ System with our 10-year warranty and you'll have the peace of mind that your floor will stand the test of time.



## Green and Sustainable

Curecrete takes great pride in providing a green and environmentally friendly system. Caring for the environment is a great concern for owners, contractors, architects, and others involved in the construction industry. We are proud to provide a concrete polishing system that is green and contributes to the qualification of LEED certifications.



Eliminate Coating Failures



Using RetroPlate™ — There Are No Topical Coatings to Fail

## RetroPlate™ protects and enhances:

Arenas • Automotive • Convention Centers • Commercial  
Corrections • Education • Grocery • Industrial • LEED  
Manufacturing • Medical • Restaurants • Retail

# Environmentally Safe

One of the many advantages of using the RetroPlate System is that it is environmentally safe. It is:

- Water-based
- Odorless
- Non-flammable
- No VOCs, solvents, toxic ingredient
- No VOCs
- No toxic ingredients
- No harmful vapors
- Requires no protective clothing
- No breathing apparatus



VE Commercial Vehicles Ltd, Pithampur, MP  
2011, Area - 2,00,650 sqft

# Benefits of RetroPlate™

- Abrasion Resistance: Up to 400% greater
- Impact Strength: Up to 21% greater
- Light Reflectivity: Up to 30% greater
- Lowest 10-year life cycle cost
- Virtually maintenance free – dust mop, water and a neutral cleaner
- No adverse reaction to ultraviolet light or water spray
- Eliminates moisture vapor failures related to floor coverings
- Does not support combustion ... eliminates smoke or toxic fumes
- Qualifies for inclusion on Silver, Gold and Platinum LEED



Siemens, Gurgaon, HR  
2018, Area - 4,000 sqft



# Application

The RetroPlate Concrete Polishing System follows these basic steps performed by our certified applicators ensuring that every floor turns out just right.

The first step is to grind the floor with industrial strength diamonds. Grinding removes imperfections, marks and scratches, and exposes bare concrete by removing existing coating or mastic. Grinding can be light to heavy depending on the desired level of exposed aggregate.



Add style and personality to your polished concrete floors with an array of color options. Achieve any look and style with full color floors, custom logos or unique patterns.

The next step is to densify the floor with RetroPlate. RetroPlate penetrates the concrete and chemically reacts to harden and densify the floor by filling-in pores and creating a dense surface. Densification is key to the long-term benefits of polished concrete.



The final step is to polish the floor with progressively finer diamond grits. This polishing procedure is what produces the floor's sheen. A floor can be polished to a flat (ground), satin (honed), polished or highly polished finish.

## Natural Product

The RetroPlate System is a water-based, sodium silicate product that works by chemically interacting with the calcium hydroxide in the cement component of concrete. We are not creating a topical floor covering, nor are we creating a flooring product that will require extensive maintenance, stripping, ongoing topical treatments or future disposal in a landfill. We are simply utilizing natural products to enhance the performance of other natural products, and we do it in a safe, environmentally friendly, cost-efficient way.



## Considerations

RetroPlate 99 is a patented densifier for polished concrete. RetroPlate 99 provides a hardened, durable, and dense concrete surface when applied after smoothing and honing of the rough, pitted concrete or removal of soft, carbonated concrete surfaces prior to Level 1, 2, 3 or 4 finishing. Over time, RetroPlate 99 increases in penetration resistance.

RetroPlate 99 must be applied to structurally sound concrete surfaces. Soft, carbonated or structurally unsound concrete surfaces must be removed so that RetroPlate 99 can react with a stable substrate. All restrictive coatings must be removed to allow RetroPlate 99 to fully penetrate the concrete surface.



## Technical

RetroPlate is a chemically reactive concrete stabilizer that enhances concrete density and hardness, allowing floors to be finished to a high cosmetic, marble-like sheen.

## Uses

- New, bare concrete
- Old, deteriorating, dusting floors
- Dull, rough, pitted or raw-looking concrete
- Overlays, toppings or expensive recoatings are required
- Marble-like, hard shell, maintenance free finish is desired



The RetroPlate™ System works successfully with bare concrete, acid stains, integral color, dry shake hardener and cementitious terrazzo.



# RetroPlate Decorative Concrete Dye

RetroPlate Concrete Dye Concentrates are a combination of specialty formulated dye/metal complexes concentrated in a water-based, LOW VOC solution that can be diluted in water, alcohol or acetone.

RetroPlate Concrete Dye is a concentrated solution, not a dispersion, ready for immediate use without any dwell or reaction time like dye powder concentrates. When applied to bare concrete, polished concrete or overlays, RetroPlate Concrete Dye will provide intense, translucent color effects, similar to stains, without creating a film or coating that can be worn away.



## AVAILABLE RETROPLATE DECORATIVE CONCRETE DYE COLORS



*Gold*



*Caramel*



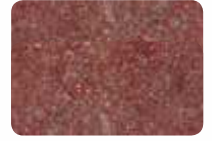
*Chocolate Brown*



*Walnut*



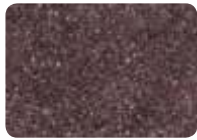
*Burnt Sienna*



*Chestnut*



*Maroon*



*Eggplant*



*Turquoise*



*Slate Blue*



*Patriot Blue*



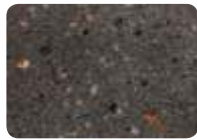
*Green*



*Forest Green*



*Midnight Black*



*Black*

**Note:** colour shown in the brochure and colours at actual site may vary depend on floor condition.

## Warranty

The manufacturer guarantees that the product will be of consistent color and mixture when received. The manufacturer has no control over the use of this product; therefore, no warranty, expressed or implied, is or can be made to either the effects or results of such use. In any case, the sellers and manufacturer's obligation under this warranty shall be limited to refunding the purchase price or replacing material proven defective.

# Maintenance

An effective maintenance program that includes routine scrubbing with soft to medium maintenance pads, ample down pressure and proper amounts of water and detergent will enhance the floor's performance significantly.

**Scrub Floor Often:** Minimum routine cleaning 2-3 times per week with CreteClean Plus with Scar Guard provides superior results.

**Clean Spills Quickly:** After densification is complete, concrete will resist contamination and moisture penetration of most liquids. Corrosive or aggressively staining contaminants should be removed quickly to avoid possible staining.

**Burnish Once Weekly:** For best results, burnish the floor with a high speed propane burnisher and hog's hair pad following daily cleaning.

# Recommended Products

DETERGENT:



- 5 gal. (19 L) pails
- 55 gal. (208 L) drums

22 oz. (651 mL) Cartridges - 12 Per Case  
1 (3.79 L), 2 (7.58 L), and 10 (37.9 L) Gallon Kits\*  
\*Upon Request

22 oz. (651 mL) Cartridges - 12 Per Case  
1 (3.79 L), 2 (7.58 L), and 10 (37.9 L) Gallon Kits\*  
\*Upon Request

## Farm Machinery



Tafe Ltd, Chennai, TN  
2012, Area - 1,02,085 sqft

## Electronics



Secure Meter Ltd, Ahmedabad, GJ  
2018, Area - 25,884 sqft

## Filtration Manufactures



Donaldson India Filter Systems Pvt Ltd, Manesar, HR  
2017, Area - 15,000 sqft

## Construction & Mining Machinery



L & T, Bangalore, KA  
2016, Area - 11,006 sqft





ONE COMPLETE SYSTEM FOR ALL YOUR CONCRETE FLOORING NEEDS



CONCRETE FLAT WORK

CORROSION PROTECTION

OVERLAY

GREEN INDIA

JOINT FILL

DENSIFY



PROTECT FLOOR

REPAIR

CLEAN

**JBA**  
*Bringing Life To Concrete*

Address : JBA Concrete Solutions Pvt Ltd  
 135, Arjun Nagar, Kotla Mubarakpur  
 Opposite Defence Colony, New Delhi - 110003 (INDIA)

Telephone : 011 41553830, 011 41553820

Fax : 011 41554130

Website : [www.jbaindia.com](http://www.jbaindia.com)

Email : [info@jbaindia.com](mailto:info@jbaindia.com)